



**MATRIX  
THREAD GRINDING  
SOLUTION**

# 3060

## Matrix Model 3060 Internal Thread Grinding Machine

### Standard Features Include:

- |   |                                |
|---|--------------------------------|
| Torque Motor Driven Work Head                   | Siemens 840DE CNC Control      |
| High Frequency Spindle Wheel Head               | Coolant Clarification System   |
| Programmable Helix                              | Centrifugal Separator          |
| Absolute Encoders fitted on all configured Axes | Magnetic Separator             |
| Work Head Mounted Dresser                       | Spindle Chiller Unit           |
| Remote Diagnostics                              | Totally Enclosed Hood          |
| 1 x Diamond Dressing Media                      | Fume Extraction                |
| 1 x Grinding Wheel                              | Air Conditioned (ECC)          |
| 1 x Hard Metal Quill                            | 1 x Test Grind (Customer) Part |
| Matrix ProfileMATE Software                     | Installation & Commissioning   |

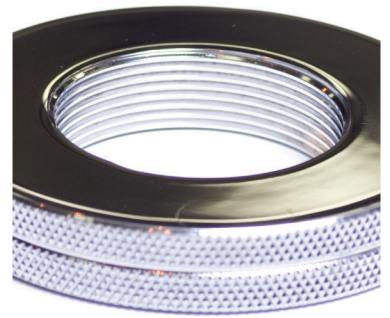
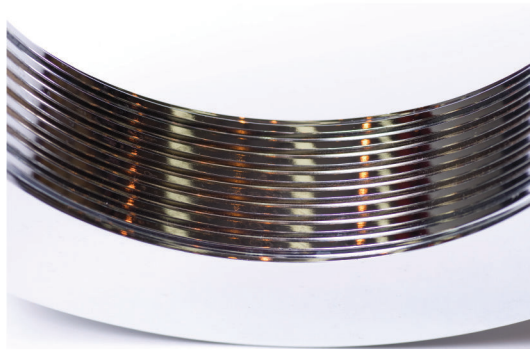




# MATRIX THREAD GRINDING SOLUTION

## 3060

### CNC Precision Internal Thread Grinding Machine



#### Machine:

Max Diameter Swing	300 mm
Max Diameter Ground Bore	200 mm
Min Diameter Ground Bore	8 mm
Max Length of Ground Bore	100 mm

#### Work Head: (C Axis)

Torque Rating	154 Nm @ 120 RPM
Work Speed Range	0.4 to 120 RPM
C Axis Resolution	0.001°

#### Wheel Head:

High Frequency Spindle	5000 - 30000 RPM
Helix Capacity (A Axis)	± 20°

#### Wheel Head: (Z Axis)

Table Slide Travel	500 mm
Table Slide Position Resolution	0.0001 mm
Table Slide Traverse Speed	0 - 7 M/Min

#### Wheel Head: (X Axis)

Wheel Head Slide Travel	310 mm
Wheel Head Position Resolution	0.0001 mm
Wheel Head Slide Traverse Speed	0 - 7 M/Min

#### Wheel Dressing Unit:

Work Head Mounted	Fixed
Variable Speed	0 ~ 6000 RPM (Bi-Directional)
Dressing Feed Rate	Programmable

#### Control System:

CNC System	Siemens 840 DE Solution Line
System Specification	PCU50.5
User Interface	Siemens HMI Advanced Software
8" Colour TFT Screen	Resolution 640 x 480 Pixels
Operating & Programming	Matrix Advanced Programming

#### Machine - Physical:

Approx Gross Machine Weight	6500 Kg
Approx Machine Floor Area	3800 mm x 3500 mm

Note: These capacities are subject to inevitable restrictions, depending upon wheel head, Helix angle, Work Holding, Support Equipment and are subject to change without notification.



## Matrix Machine Tool (Coventry) Limited.

Unit 4, Spitfire Close, Coventry Business Park, Coventry, CV5 6UR England.

Tel: +44 (0) 2476 71 8886 · Fax: +44(0) 2476 67 8899 · Email: sales@matrix-machine.com

<http://www.matrix-machine.com>