



WD Hearn MACHINE TOOLS
ESTABLISHED 1937

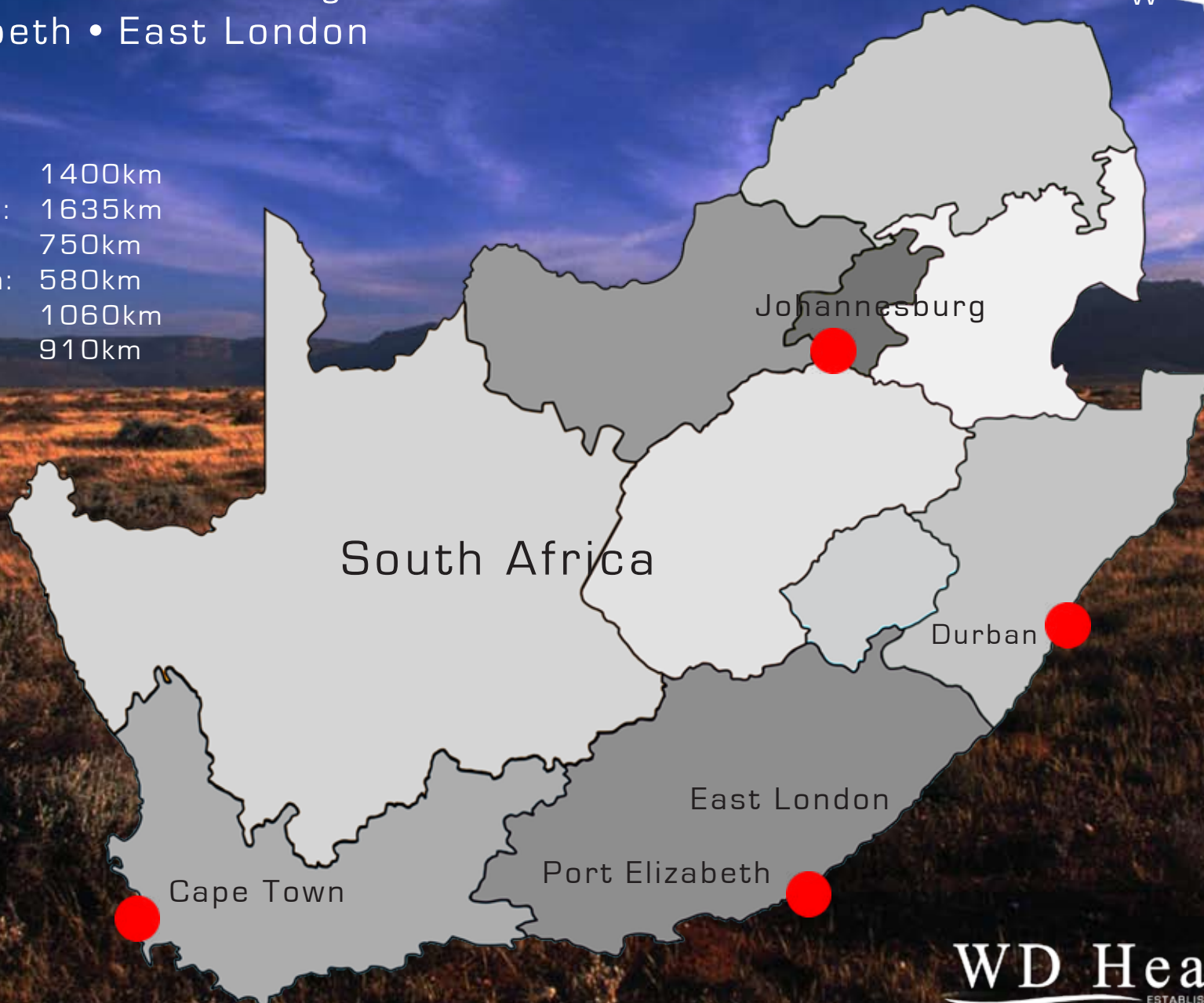
Company Presentation

WD Hearn Offices

Cape Town • Johannesburg • Durban
Port Elizabeth • East London

Distances:

CPT to JHB: 1400km
CPT to Durban: 1635km
CPT to PE: 750km
JHB to Durban: 580km
JHB to PE: 1060km
PE to Durban: 910km





COMPANY INFORMATION

Since WD Hearn was established in 1937, we have built an outstanding reputation throughout South Africa with excellence through service. In 1987 we sold our first leadwell CNC machining center and since then over 1500 Leadwell machines have been installed across South Africa.

We have dedicated admin staff for handling the import and export of machine tools, spares and accessories.

WD Hearn has a large stock holding of cnc machines, metrology equipment, conventional machines and tooling.

WD Hearn has one of the top service departments in the country, with highly-skilled CNC machine engineers, as well as two of the countries most experienced Applications Engineers. We also have an in-house training room for courses in relevant CNC operating systems.

WD Hearn is consistently up to date with the latest worldwide machine tool developments and current market trends. We also make a point of understanding all customers needs to ensure that professional and customer-specific advice is given.





CAPE TOWN: HEAD OFFICE

- Eric De Koker, Francis Hardiman and Matthew Noah handle the sales support to the branches for Flat Bed lathes, Conventional lathes, Turret Mills, small tools, machine tool accessories, Hydraulic Chucks, Vices and a huge variety of hand held engineering equipment.
- Ray Cooper, Graeme Cooper and Andre Eslin offer sales and marketing support to Mike Lehmkuhl, Marius Conradie, Peet Buitendag, Myles Crosthwaite and Simon Griffiths. WD Hearn's CNC sales team offer outstanding product knowledge and machining advice to our customer base and can supply, install, commission and support a huge variety of CNC machine configurations; from Horizontal Boring to Vertical Machining to 5-axis CNC Machining to Vertical Turning and Turnkey Projects.
- For those customers who require temporary additional capacity, don't hesitate to contact us for our loan machines project.



Ray Cooper
Managing Director



Graeme Cooper
Sales Director



Eric De Koker
Internal Sales



Andre Eslin
Sales/Applications



Johan Neveling
Applications



Dylan Eva
Metrology Applications



Francis Hardiman
Conventional Sales



Matthew Noah
Internal Sales



Cape Town Service Engineers
Mechanical & Electrical skillset

- 1200m² of floor space
- Spindle Refurbishment centre
- Communication link to international principles
- All operations are managed from here.



WD HEARN BRANCHES

Johannesburg



- WD Hearn CNC Technology Centre and Siemens control specialists
- Drive motor and electronic testing facility
- Large machine type experts
- Large spare parts stock holding
- 700m² of floor space

Durban



- Factory floor space: 220m²
- A Cad Cam training facility for Edgecam/Sinutrain
- Fully operational sales office and accounts department
- Stockholding of cnc machining and turning centres here
- Second-hand division

Port Elizabeth



- Factory floor space: 800m²
- Special purpose fixturing design specialists
- Stock holding spares
- Centrally located
- Mechanical and Electrical engineers



JOHANNESBURG CNC TECHNOLOGY CENTER



State of the art facility

In 2016 WD Hearn launched their Johannesburg CNC Technology Center, a highly significant moment in the company's history. The state-of-the-art multi-purpose facility will perform the following functions:

- A showroom to display products and perform demos/simulations.
- To function as our Johannesburg sales and service office.
- To host special events, exhibitions, and presentations.
- A training facility offering courses in CNC programming; Siemens, Fanuc, Edgecam, and others. The facility will also be used for new machine training for WD Hearn service engineers.
- A motor and drive service center, including a test bench for motor repair.



TRAINING DEPARTMENT

Training Facility

The growing demand for CNC Programmers/Operators/Setters also brings with it a high demand for qualified training, incorporating solutions that will quickly prepare trainees for the modern day machining environment.

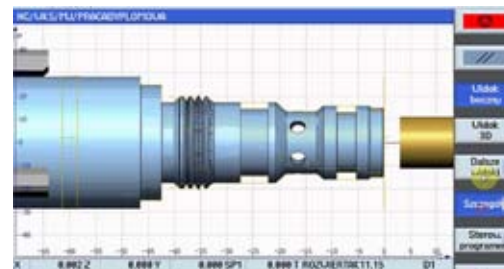
At our Cape Town premises we installed a high-tech training room which specializes in CNC programming training. The facility is equipped with Siemens Sinutrain for training on all Siemens control systems. We also offer courses in Edgecam CAD CAM software, as well as custom Fanuc training.



Siemens Sinutrain

With SinuTrain, Siemens offers you a hands-on solution for CNC training that is applicable for both beginners and experts. From start to finish, SinuTrain allows you to expand your programming and operation expertise of the innovative numerical control features found in SINUMERIK. The intuitive, PC-based solution consists of control-identical software that is perfectly tailored to meet your needs

Beyond milling and turning, it goes without saying that SinuTrain offers a wide range of technologies.





SERVICE DEPARTMENT

Today WD Hearn has one of the largest, most highly skilled service departments in the country. Our focus is on sharing ownership of the installation of CNC machines into machine shops, through the expertise of skilled technicians and application engineers. In Johannesburg, Cape Town, Port Elizabeth & Durban our engineers have all been for product training at the machine tool builders facilities. In the past 2 years we have sent engineers to Siemens Germany, Electronica India, Mag USA, Yushine, Flow Waterjet, Leadwell and Sanco.



Service Engineers employed:

- Mechanical
- Electrical
- Applications

Service offered:

- CNC Retrofits
- Special purpose machine design and local build
- PLC: Writing & Programming
- Turn key projects: Programming, Fixtures

Applications:

- CNC Programming
- Cycle times
- Renishaw retrofits & system solutions

Siemens

WD Hearn became official Siemens partners in 2007 and have been handling the aftersales service on all our Siemens 802dsl & 828D control requirements, including stocking of Siemens drives, controllers and motors in JHB and Cape Town.



Ford Installation

In 2011/ 2012 WD Hearn Machine Tools were responsible for the installation of 80 Horizontal Machining Centers into Ford, the largest engine plant in Africa. The project is running triple shifts with more machines likely to be ordered.



We have extensive product knowledge within the WD Hearn group in both application and service & repair. for an outstanding reference list, please don't hesitate to contact your nearest branch.

RENISHAW



WD Hearn own's Renishaw probing/lazer systems and software for machine accuracy testing, repairs and maintenance. Renishaw probes offer the highest precision and accuracy, while providing solutions for tool setting, broken tool detection, component set-up, in-cycle gauging and first-off inspection of parts, with automatic offset updates.

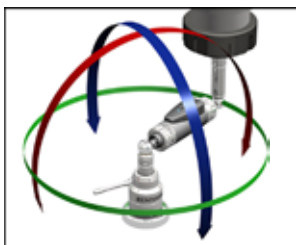
Renishaw XL-80 laser measurement system

The XL-80 laser interferometer offers the ultimate in high-performance measurement and calibration for motion systems, including CMMs and machine tools. Linear measurement accuracy is an assured $\pm 0.5\text{ppm}$ over the whole environmental range. Readings are taken at 50kHz, with a maximum linear measurement speed of 4m/s and a linear resolution of 1nm.



QC20-W ballbar

The QC20-W is a brand new design featuring a Renishaw developed linear sensor and Bluetooth wireless technology. This design offers benefits in ease of use and enhanced durability, and allows the QC20-W to be used for testing even in "closed door" manufacturing, where access for wiring can raise safety and procedural issues.



APPLICATIONS

WD Hearn has employed two highly skilled applications engineers. Their expertise and experience allows WD Hearn to offer tailor-made application solutions that no other machine tool company in South Africa is capable of offering. Andre Eslin handles our applications in Port Elizabeth and Cape Town, and Johan Neveling takes care of all Johannesburg and Durban's application requirements. Between Andre and Johan's experience we are capable of handling training on all popular control types from Fanuc to Siemens to Mitsubishi, support on a variety of CAD/CAM systems, and training on a broad range of machine configurations, from C-axis Lathes to 5-axis Machining Centers, to Swiss Type Turning and Horizontal Machining Centers. We are striving to become the most technical machine tool company in the country.

Training

WD Hearn offers full CNC training on-site, or at our training room in Cape Town; fully equipped with Sinutrain for training on all Siemens control systems, as well as courses in using Edgecam's CAD CAM software.



Turn Key Projects

WD Hearn offers a broad range of fully designed & delivered turnkey solutions to fit any production or jobshop requirements. Our solutions come complete with extremely accurate cycle times and advise on the correct equipment to purchase.



Remote Programming Assistance

If you are a WD Hearn client in South Africa and require quick programming assistance, we can help online and telephonically with full Programming & Application support.





INTERNATIONAL SUPPLIER VISITS

Chiah Chyun

We visited the Chiah Chyun factory in 2011/12/13/14/15/16

EMO Tradeshow

WD Hearn visited the EMO tradeshow in 2011/13/15

Trade Show - Taiwan

WD Hearn were at TIMTOS in 2007/09/11/13/15

Mitsubishi

WD Hearn service engineers visited Mitsubishi Germany in 2014/15/16

Kitamura - Japan

We visited Kitamura Machinery in Japan in March 2015

Partmaker

WD Hearn visited Partmaker in 2016

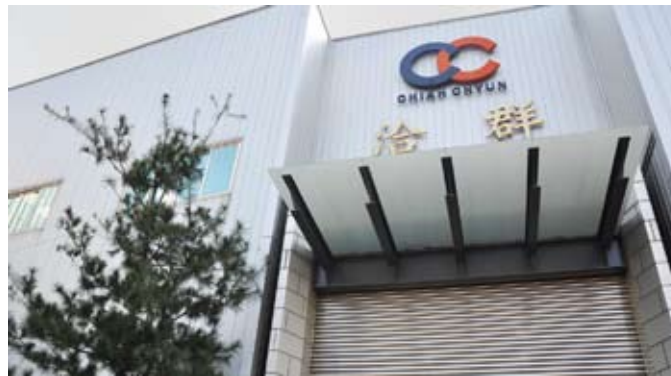
Leadwell

WD Hearn visited Leadwell in 2010/11/12/13/14/15/16

Siemens

WD Hearn visited the Siemens Technical center in 2012/13/14/15/16

Other Overseas Visits: Flow Waterjet in Germany, Nikon Metrology in France, SANCO in Taiwan, and Renishaw in the UK.





INSTALLATIONS

Transnet

Salt River:

- 2012 - 1 Sanco Bed Type Milling Machine
- 2012 - 1 Yushine VL1200 ATC

Koedoespoort:

- 2012 - 2 Sanco 16m Bridge Type Machines
- Transnet's largest CNC machines to date.

Saldanah:

- 2012 - 1 Yushine VL1200 ATC CNC Vertical Lathe

Uitenhage:

- 2012 - 1 Lexus WA460 Band Saw



Bell Equipment

12 sets of Leadwell LTC-35CXL CNC turning centers were installed successfully in Johannesburg.



FORD

In 2011/ 2012 WD Hearn Machine Tools installed 80 Mag[US and Germany] Horizontal Machining Centers into the largest engine plant in Africa.



Alba

Leadwell T-6, T-7 and V-40



CAMBRO

52 Machines installed, commissioned and serviced by WD Hearn.



JOY Mining

2012 - 1 MAG Horizontal Floor Borer



SWASAP

2 Leadwell LTC-35CXXL machines installed.



Daliff

Leadwell V-40iT, V-30 and V-50L



SA Metal

LTC-50 CXXL M
LTC35 CXL M



Strucmac

Skoda 10m Floor Borer, SANCO SHM13040R, SHM11020RF, SHM11030R, SDM-425
Leadwell MCV-1500, V-60iT, LTC-35 CXL M



Denel

Leadwell V-40iT, V-30, 2 x V-50L, 2 x LBV-5225, 3 x LBV-3224, 6 x VMC-40 and a Metronor duo system





CUSTOMERS





AGENCIES



CNC MACHINES



CMM MEASURING SYSTEMS



LAZER WELDING AND LAZER ENGRAVING MACHINES



CNC MACHINES



CNC FLAT BED LATHES & CENTER LATHES



GRINDING MACHINES



HORIZONTAL BAND SAWS



VERTICAL TURNING MACHINES



CNC ROTARY TABLES



Ann Way Machine Tools



LAZER WELDING AND LAZER ENGRAVING MACHINES



HOLD WELL INDUSTRIAL CO., LTD.



FAIR FRIEND GROUP



MACHINING CENTERS

HORIZONTAL MACHINING CENTERS



Kitamura

HX250G, HX400, HX500G,
HX800G, HX1000i

VERTICAL MACHINING CENTERS



Leadwell

V-Series, MCV-Series

Kitamura

3XG, 3XD, 4XT, 4XD, 7X, 3XG Spark Changer

GSM

GSM-800, 1000, 1500

Sanco

SBM-Series

5-AXIS MACHINING CENTERS



Leadwell

V-20i, V-40iT, V-60iT

Kitamura

Mycenter 4XT, Mytrunnion 1, 4G, 5G
Mycenter Supercell 400

LEADWELL



KITAMURA



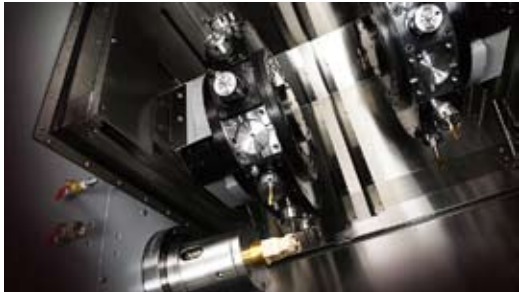
SANCO

WD Hearn MACHINE TOOLS
ESTABLISHED 1937



TURNING CENTERS

HORIZONTAL
TURNING CENTERS



Leadwell
T-5, T-6A, T-7A, T-8XL, T-7i,
LTC-20, LTC-25, LTC-35,
LTC-50, LTC60

CC Machinery
CT1, CT2, CT3, CDS32/42

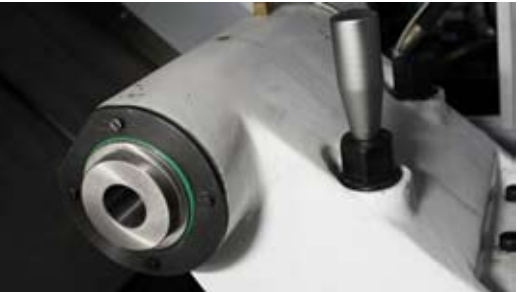
SWISS TYPE
TURNING CENTERS



CC Machinery
CB32M, CY2-52MB,
CDS32/42, NCY-32M

Tornos
CT 20, Swiss ST 26,
Swiss Nano, Swiss GT series

FLAT BED
TURNING CENTERS



DMTG
CKE series, CKH series,
CKH series

MULTI TASKING
TURNING CENTERS



MAS
Multicut 500i
multicut 630

CC Machinery
CY2-52MB
CT3-2Y65MB



BRIDGE TYPE

SANCO



SANCO

SDM3220, SDM5225, SDM7232
SDM7235W, SVW3222, SDM16040MA

KITAMURA



Kitamura

Bridge center 6G, Bridge center 8F,
Bridge center 10



BORING MILLS

VERTICAL BORING MILLS



Yu-shine
VL-1200 ATC
VL-850 HLR



HORIZONTAL BORING MILLS



Sanco
SHM-11020RF
SHM-13040R
SHM630



HORIZONTAL FLOOR BORERS



Skoda
HCW4000





EDM/WEDM



EDM EA8S/EA12S



EDM MV SERIES





CNC CONTROLS

SIEMENS



808D
828D Basic
828D
840DSL

SIEMENS

FANUC



Oi-MD
Oi-MB
Oi-MF
Oi-TF

FANUC

MITSUBISHI



M-70
M-700
M-80
M-800

MITSUBISHI

SYNTEC



6MA

SYNTEC

ARUMATIK



Arumatik-Mi
Arumatik-Mi Jnr

KITAMURA



WATERJET



MACH 2B



Traverse Range	Up to 400 in/min
Linear Accuracy	+/- 0.003 in/3 ft
Repeatability	+/- 0.002 in

MACH 3B



Traverse Range	Up to 500 in/min
Linear Accuracy	+/- 0.0015 in/3 ft
Repeatability	+/- 0.002 in

MACH 4C



Traverse Range	Up to 1,400 in/min
Linear Accuracy	+/- 0.001 in/3 ft
Repeatability	+/- 0.001 in



METROLOGY

**PORTABLE
MEASURING**



McAX
Arm range
MMDx series
scanning head
K-series
Optical CMM
Nikon

CMM



Altera
CMM
Nikon

**WORKPIECE
MEASURING**



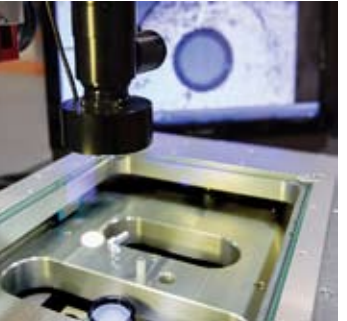
OMP-40/Omp-60
Optical Transmission
Probes
RMP40/RMP60
Radio Transmission
Probes
RENISHAW

**TOOL
SETTING**



TS-27R
Contact Tool Setting Probe
OTS
Touch-trigger Tool Setter
NC-4
Non-contact Tool Setter
RENISHAW

**VIDEO
MEASURING**



MV-300
Video Measuring
System
Starrett®

**SHADOW-
GRAPH**



HB400
Horizontal Benchtop
Optical Comparator
VF600
Vertical Floor Standing
Optical Comparator
Starrett®



LASER



LASER MARKING

EASY 200F



Diode
Marking Laser

LASER ENGRAVING

BSS 3D



Laser Engraving
Machine

LASER WELDING

LMD 60



Manual
Welding Laser

SWA SWA 150/300



Laser
Welding Machine



GRINDING

SURFACE GRINDING



Kent

KGS 250 AHD
KGS 63 AHD
KGS 84 AHD
KG 615 AHD



CYLINDRICAL GRINDING



Palmary

GU32 X NC
OCD-65300



CENTERLESS GRINDING



Palmary

FCL12
FCL20
FCL1810





CONVENTIONAL

LATHES



CDL6241
 CDL6251
 CDS6266C
 CW62100x5000mm



TURRET MILLS



2VS
 4VS



SAWS



UE-250V
 UE-812A
 Lexas 250NC



DRILLS

BELT DRIVE

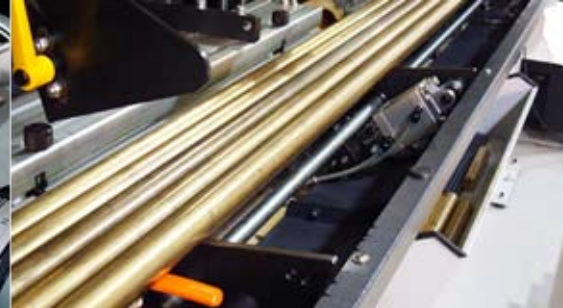


CH18
 CH25

GEARED HEAD



Z3050
 Z5050



ROTARY TABLES

4TH AXIS TABLES

5 AXIS (3+2)
TRUNNION TABLES



Golden Sun
CNC 120R
CNC 250R
CNC 320R



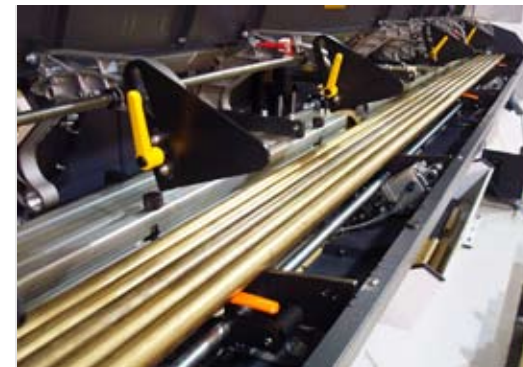
Golden Sun
CNC T-200
CNC T-320



BARFEEDERS

SHORT BARFEEDERS

LONG BARFEEDERS



Barload
BA65
BS65
BSM80
BK105



Barload
VITO 56





SOUTH AFRICA OVERVIEW

- Population: 53 Million
- SA's GDP: The 27th biggest worldwide at 350 Million Dollars.
- GDP Growth: 2012 - 2.5%, 2013 - 1.9%, 2014 - 1.4%
2015 - 1%, 2016 1st Quarter - 0.5%
- Economic powerhouse of Africa and her natural resources.
- Best performing sectors: Automotive, Mining, Agriculture, Banking, Communications, Tourism, Wholesale and Retail trade, Finance and Business Services.
- Stock Exchange JSE among the top 20 in the world.
- Automotive OEM's in SA: Mercedes in East London, Toyota in Durban, BMW in Rosslyn Pretoria, VW in Uitenhage, and the Ford Strundale plant in Port Elizabeth.
- Transnet 2012 recapitalisation program.

